



Headliner

Business Review follow-up:

DOE, GE focus on future highlights preparation for "transparent transition "

DOE's Pinellas Area Manager, Gerry Johnson, addressed two issues of high importance to Pinellas Plant employees at the Business Review Meeting.

- * the contractor transition process
- * Reconfiguration Study

He cited the experience DOE has in this process with contractor management being transferred by Union Carbide, Monsanto, DuPont, Rockwell, and Mason & Hanger, to companies

The selection process has four major goals:

- * Maintain the existing technology base
- * Maintain a highly motivated workforce
- * Provide comparable benefits/pay
- * A transparent transition process

Johnson noted key dates as:

- * Requests for Proposals going out in May of this year
- * Returned for a Source Evaluation Board for review; contractor selection would be targeted for January, 1992, and
- * Negotiations would follow soon thereafter, leading up to contractor transition by May 1992, following an estimated two month overlap with General Electric

He also discussed the realities being faced by the DOE -- Arms Control Treaties, the expected "peace dividend", and the impact of big ticket items such as the Super Collider, new production reactor, and environmental cleanup.

Reconfiguration or Modernization?

An issue dear to the hearts of most associates in the Pinellas Plant is the DOE evaluation of what the course of the future will be within the Weapons Complex -- a study that is called "Complex 21", released recently. It has as its goal to find ways for the complex to be smaller, less diverse and less expensive, while meeting national defense program objectives.

While some nuclear sites will be modernized or relocated, non-nuclear sites such as Pinellas, Kansas City and Mound will be evaluated using the options of privatization and/or consolidation at a single site.

The Department will comply with National Environmental Protection Agency requirements and prepare a Programmatic Environmental Impact Study to evaluate the consequences of reconfiguration studies. The PEIS will provide public forums for discussion and comments.

(continued next column)

35 year Tradition provides reason to be proud, confident

Messages from General Manager Dick Abington, a recall of the history of the plant by Al Bentley, an appearance by the "father of the plant", the first General Manager Ad Persons, and a set of challenges by Tom Lavery, supported the tradition of pride for the 35 year involvement of the Pinellas Plant in the defense of our country.

Such were the themes of the Business Review Meeting at the Bayfront Arena this week, attended by about 1200 associates of General Electric and representatives of DOE.

Memorable views of the plant's history spread through the lobby, teasing the mind to the recall of times gone by, only to be surpassed by a huge monitor displaying video sights of the many faces and activities which have made the plant full of its traditions.

Dick Abington led the salute to associates leading appreciative applause for a job well done. He stated that while the world is changing, so does our work, from machines to more word processing and service tasks. He also predicted that the world will change again - and that we must be prepared.

Abington also predicted that this plant will attract top flight companies in the bid competition, and that they will be gaining an excellent workforce and business opportunity. "Life doesn't end when GE leaves this business," he said.

He also called attention to a meaningful salute to our employee family represented in the Persian Gulf, and to the Vietnam veterans in our work force, another standing ovation.

Although more Q&A's were received than time permitted answers, he promised they will be responded to fully and formally.

Doing our best!

Among the challenges set for Pinellas Plant associates during the Business Review meeting this week was one of being our best for any contractor who looks at us for the bidding process with the DOE.

And, there's reason for a contractor to be pleased. Looking at the Performance Assessment given the plant by DOE, five of seven ratings were "Excellent" and two in the "Good" category, at the end of the fiscal year. Especially noted was the improvement in the ES&H category, up from "good to excellent" over the previous rating period.

It was reported that an overall downward trend in the monthly injuries since the beginning of 1990 had occurred, but associates were urged to an increased awareness for the overall objective set for the plant to get injuries down to the "zero" level.

Comparing the makeup of operating costs and budgets for FY1990 and FY 1991, charts displayed the change in the make-up of the work going from 59%-41% weight on production expenditures, to a 52%-48% emphasis on non-production expenses for FY1991, with a budget increase in the budget from \$123.9M to \$132.6M for the period.

There has also been an attractive downward trend of inventory costs through the Feb. '91 measurement period.

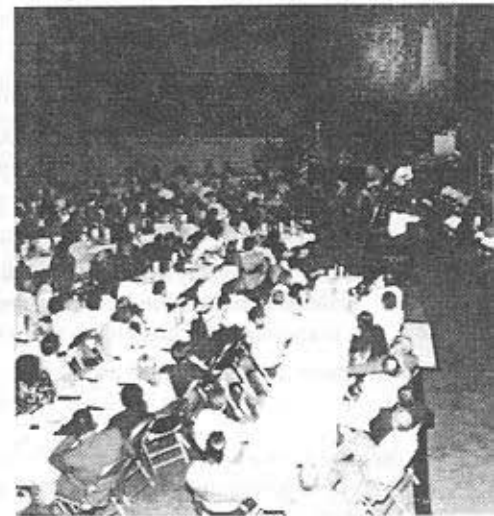
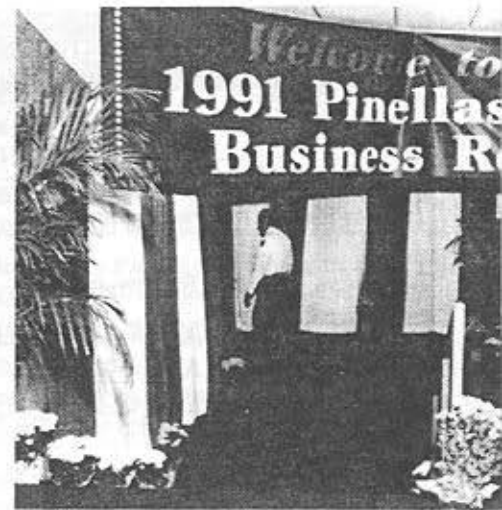
A stronger communication commitment for the future was announced, with Focus Forums, and Issue Sessions, to help the plant population comfortably deal with the personal and the business issues of transition.

There is a need for all associates to know that if we continue to improve and to look our best, a new contractor should be excited to gain the bonus of having this fine workforce and facility to gain if they win the bidding.

(Johnson's remarks)

Earliest decisions are targeted for Oct. '93, and the potential impact, IF ANY, on the Pinellas Plant could take several years to take effect.

Summarizing his views, Johnson predicted continued budget constraints, experiments with privatization and consolidation, and changes, but no BIG surprises.



... "The X-ray department said ok to St. Petersburg as a plant site, particularly since that would get them a young man named Ad Persons.

Ad accepted the position of Plant Manager March 28, 1956, and the real tradition of Pinellas Pininsula Plant and what was to be called the 908 Section had begun."

Al Bentley, March 27, 1991





*A university study showed
that, of the things we fear...*

40% never happen

30% are past

12% are needless

10% are petty or small

8% are real,

but are divided into:

*those you can solve, and,
those you cannot.*

*Don't let worry and tension
affect your wellness!!!*

Your Safety Leaders....

GEEAA NEWS --

Once again -- the rescheduling of the deep sea fishing trip is for April 20. For those who have tickets and cannot attend, please contact Dana Evans, (ext. 8376), Scoop Merricks, (ext. 8934) or Flo Bryant (ext 6756) by April 5, for a refund. Call the Double Eagle III at 446-1653 about cancellation if the weather is bad on that day.

SPJC Fall Registration will take place on April 10 in the Corporate Training Facility from 8 a.m. to 12 noon.

USF Summer Registration will be on March 25 in the Corporate Training Facility, from 10:30 to 11:30 a.m.

Contact June Marks, ext. 8580 for an appointment, or for further information.

Pledges from the Walk-a-thon and mileage cards may be turned in on April 4, 5, and 8 in the back of the cafeteria at lunch time, or to George Young (ext. 8336), Lynn Wilson (ext. 6308), or Trudy Ramsay (ext. 8344). Thanks for your support.

A S Q C Dinner Meeting

The April ASQC dinner meeting will feature a clinic on the MacDill AFB Maintenance Department Quality Assurance program, in addition to the main speaker for the evening.

Coming from Sandia National Laboratory, Larry Bertholf, Director of Quality Improvement, will be the evening's featured guest.

The meeting will be at the Holiday Inn on Ulmerton Rd., with dinner at 7 p.m., following the clinic at 6:15. The cost will be \$14.

For reservations, contact Jan Eiserman, at extension 8438, by Thursday, April 4th.

Safety reminder.....

A smart move, and makes sense, too -- If you see electrical panels or equipment cabinets open, and unattended, which are not tagged out,

*call the Safety hotline
extension 6600*

Community Blood Bank returns to GEND for donations

Don't forget the return of the Community Blood bank, next Friday (April 5) between 6 a.m. and 6 p.m. The donation takes about 30 minutes and includes a blood pressure check, temperature, and iron level.

Your single donation can save the lives of up to four hospital patients, through the separation into red cells, white cells, platelets, and plasma.

Donors will receive a coupon for fried ice cream at Chi-Chi's, a key tag pen, free cholesterol screening, and an entry into a drawing for a free dinner for four at Pizza Hut.

Proud parent pointer directed at:

Justin Young, son of George Young, (senior Analyst in Design Definition) who was selected as Student of the Month by the Exchange Club of St. Petersburg. Justin is a senior at Osceola High School, an honors student the past four years, and is VP of the MICO chapter of the National Honor Society. He will attend FSU this fall as a political science major.

Nice going, Justin!

Facility Manager Update

Bob Fleming will serve as facility manager from 1 p.m. Friday, March 29 until 1 p.m. on Friday, April 5, for reporting purposes according to DOE Order 5000.3A. During that time, Bob Anderson will be the back-up for Bob.

What's Cooking --

Monday: Vegetable soup, spaghetti & meatballs, ham steak w/raisin sauce, taco burger.

Tuesday: Chicken vegetable soup, southern fried chicken, country steak w/yellow rice, Italian sausage w/peppers & onions

Wednesday: Potato/ham chowder, crunchy baked cod, chicken livers over rice, chicken filet sandwich

Thursday: Tomato rice soup, grilled chop steak, baked lasagna, hot ham & cheese on Kaiser roll.

Friday: New England clam chowder, fried cod fingers, braised beef w/noodles, hot meatloaf sandwich.

Note: Morrisons will increase prices for some selected breakfast, entree, sandwich and beverage items effective April 1.

Un-classified Ads

Sofa bed - newly reupholstered, \$95. 536-1401

Color TV - 10" to 13", good working cond., reasonable, call after 5 p.m. 791-1612

African Gray Parrot - tame, with stand, \$500. 443-6329

Daybed - white w/brass trim, simmons mattress, \$75. 443-6329

'83 Dodge camper/van- AC, AM-FM, great condition, 73K miles, \$3995. 581-4326

Bunk bed - chest, bookcase, night stand, bunkieboard, 1 year old, \$400. 866-0743

Power rake - commercial model, 5 hp, B+S, good condition, \$150. 541-2355

Dining table - glass top; **4 upholstered chairs**; excellent, \$525. 535-9595

22" S/P mower - 3.5 hp, runs good, \$65, firm. Also, mower repairs. 541-2355

Bridal gown - ivory, victorian cathedral train, etc., size 8, \$500. 596-4877

Bridesmaid gown - pink, size 3, \$100. 596-4877

Water bed - queen size, with pedestal, \$250 OBO. 581-7917

Windsurfer - Alpha, w/mast, sail & car rack, used 3 times, \$600 OBO. 544-5234

Couch/sleeper - L-shaped, \$375; **19" color TV**, \$175; **microwave**, \$75. 399-8832

Nintendo - all equipment, three tapes, \$85. 392-9435

Dehumidifier - good condition. 866-0376

Twin beds - good condition. 864-2438

Condo - sale or rent, 2-2/2, garage, fireplace, in Tampa near airport. 581-7917

For rent --

Spring special! - 3 days, 2 nights, Treasure Island, \$59. 360-0206

The Headliner is published weekly for, and about the employees of the GE Neutron Devices Department which operates the Pinellas Plant for the United States Department of Energy.

Address mail to:

Communication Programs,

GEND,

P.O. Box 2908

Largo, Florida 34649.

Communication Programs.

Norman Haddad

Printing Support

Lydia Worthen

Graphic/Photographic Support

Rick Bloss

Joel Garrison

Kathy Swain